

Rosefield Solar Farm

Environmental Statement

Volume 3
Chapter 6: Air Quality Figures

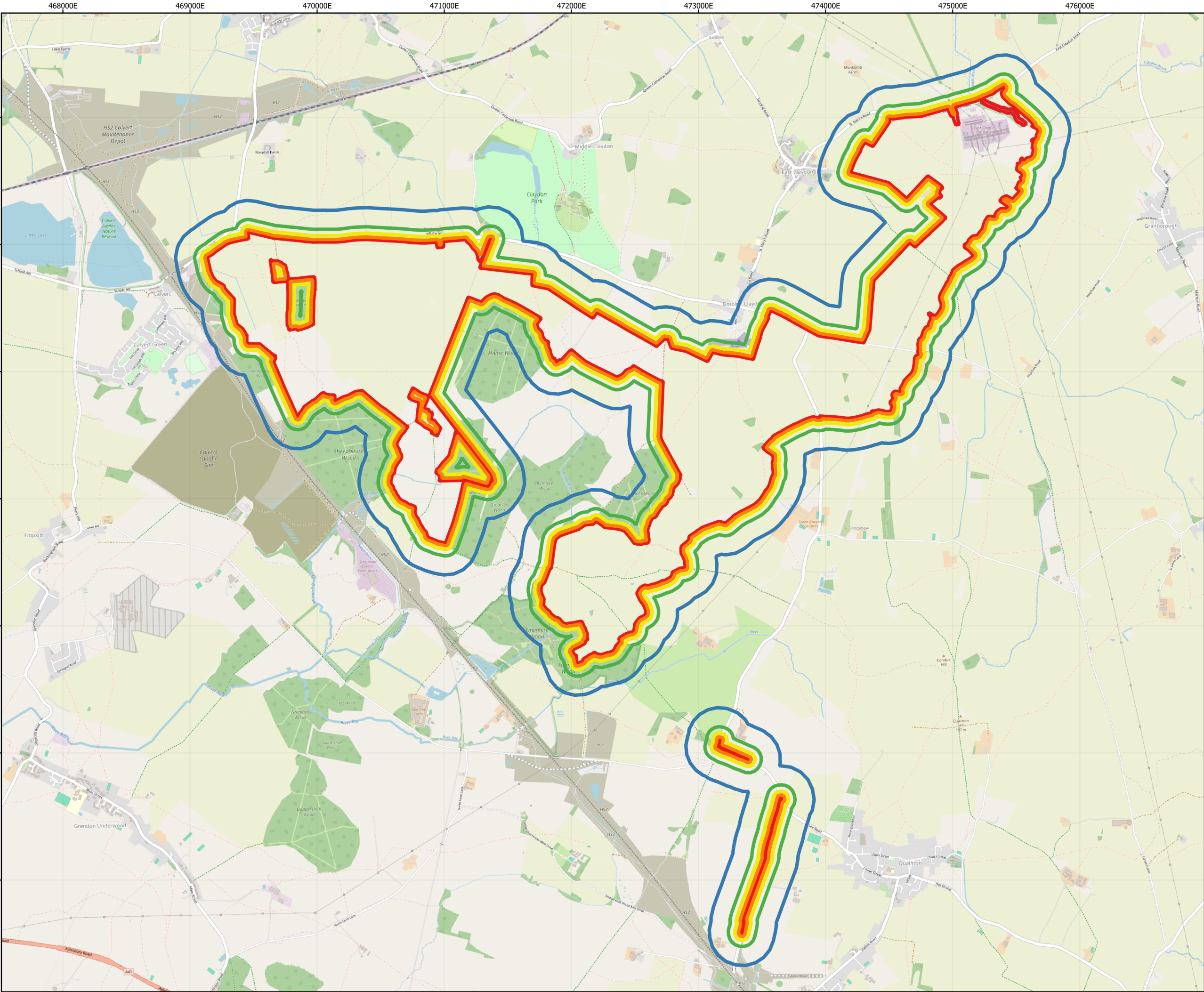
APFP Regulation Reg 5(2)(a)
Planning Act 2008
Infrastructure Planning
(Applications: Prescribed Forms
and Procedure) Regulations 2009
EN010158/APP/6.3
September 2025
Rosefield Energyfarm Limited



ES Volume 3: Figures

Chapter 6: Air Quality

Drawing number	Revision number	Drawing title	Scale
6.1	01	Demolition (During Decommissioning Phase), Earthworks and Construction Activities Study Area	1:28,000 @ A3
6.2	01	Trackout Activities Study Areas	1:28,000 @ A3
6.3	01	Location of Sensitive Air Quality Receptors	1:28,000 @ A3



LEGEND:

- Order Limits
- 20m Study Area
- 50m Study Area
- 100m Study Area
- 250m Study Area

CRS: EPSG:27700
Projection: Transverse Mercator
Ellipsoid: EPSG:7001
Units: meters

01	September 2025	DCO Submission	RSK	RSK	EDF
Rev	Date	Description	Drm	Chk	App

Rosefield Solar Farm

DOCUMENT:
ENVIRONMENTAL STATEMENT
VOLUME 3: FIGURES
REGULATION 5(2)(a)

TITLE:
FIGURE 6.1: DEMOLITION (DURING DECOMMISSIONING
PHASE)/EARTHWORKS/CONSTRUCTION ACTIVITIES
STUDY AREAS

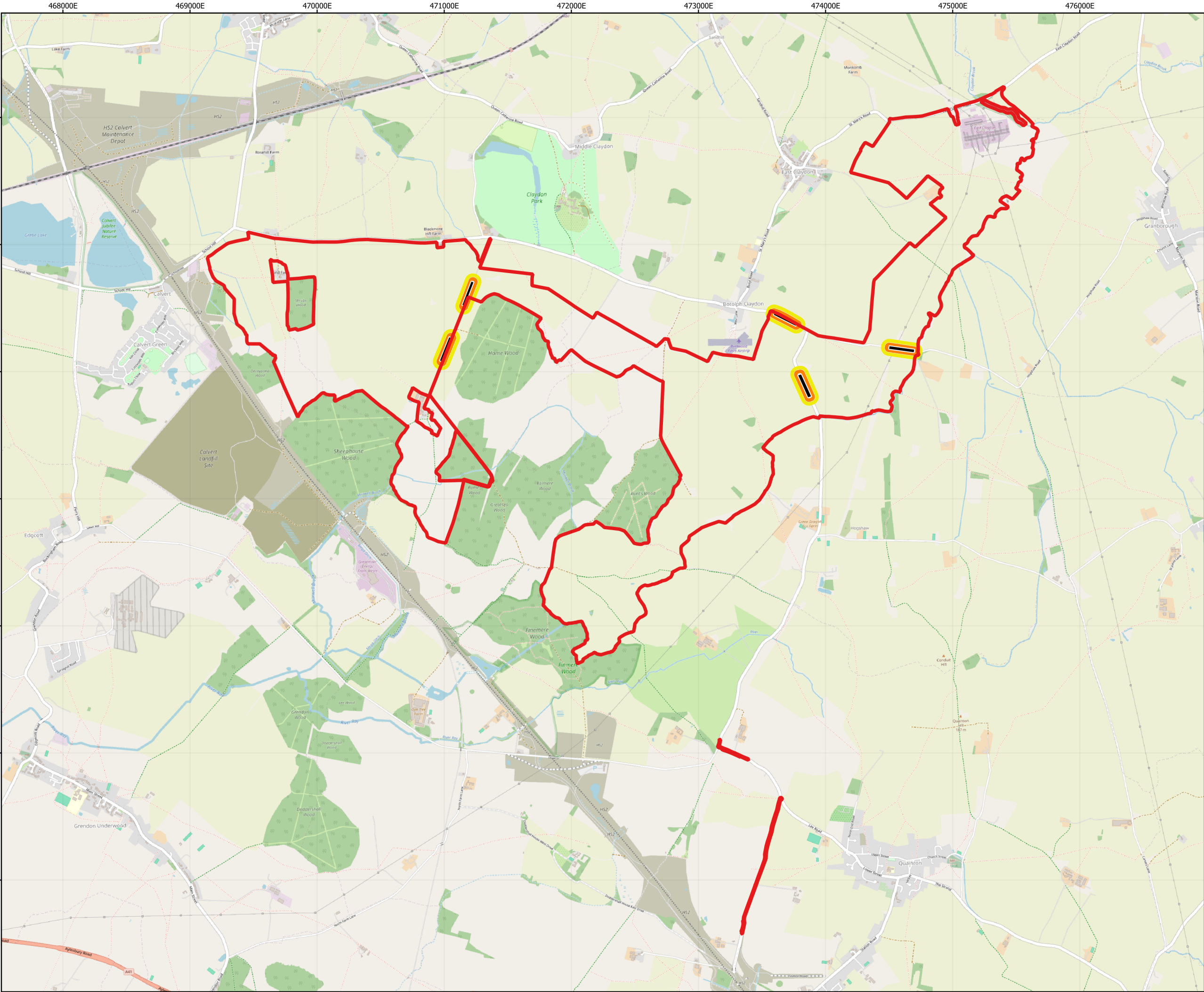
PINS REFERENCE NUMBER:
EN010158/APP/6.3

0 0.5 1

Kilometers

Scale: 1:28000 @A3

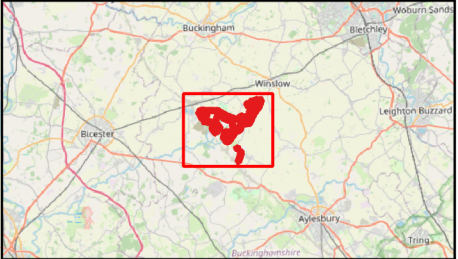
REV 01



LEGEND:

- Order Limits
- Trackout
- 20m Study Area
- 50m Study Area

CRS: EPSG:27700
Projection: Transverse Mercator
Ellipsoid: EPSG:7001
Units: meters



01	September 2025	DCO Submission	RSK	RSK	EDF
Rev	Date	Description	Drm	Chk	App

Rosefield Solar Farm



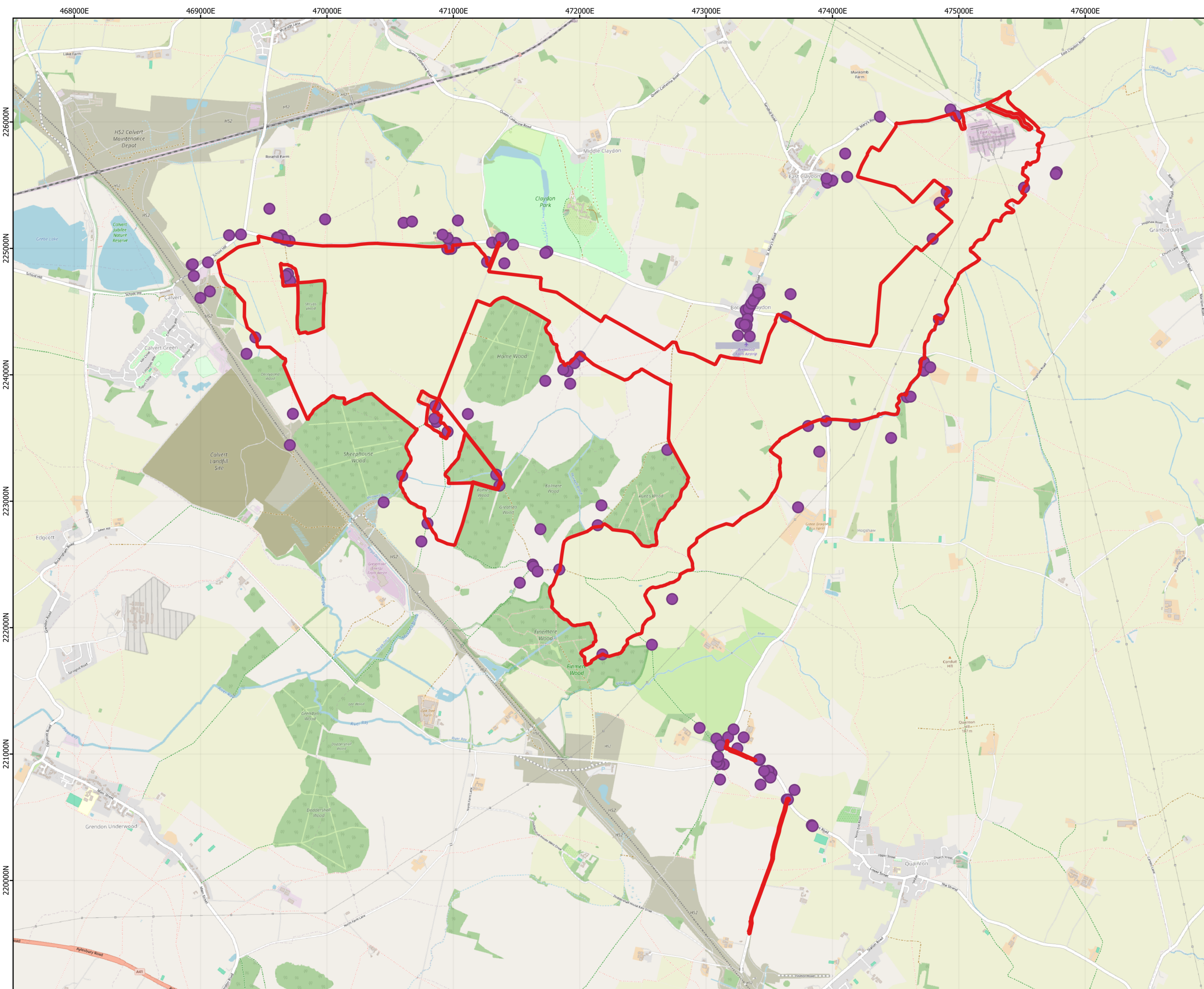
DOCUMENT:
ENVIRONMENTAL STATEMENT
VOLUME 3: FIGURES
REGULATION 5(2)(a)

TITLE:
FIGURE 6.2: TRACKOUT ACTIVITIES STUDY AREAS

PINS REFERENCE NUMBER:
EN010158/APP/6.3

Scale: 1:28000 @A3

REV 01



LEGEND:

- Order Limits
- Location of Sensitive Air Quality Human Receptors

CRS: EPSG:27700
Projection: Transverse Mercator
Ellipsoid: EPSG:7001
Units: meters

01	September 2025	DCO Submission	RSK	RSK	EDF
Rev	Date	Description	Drm	Chk	App

Rosefield Solar Farm

DOCUMENT:
ENVIRONMENTAL STATEMENT
VOLUME 3: FIGURES
REGULATION 5(2)(a)

TITLE:
FIGURE 6.3: LOCATION OF SENSITIVE AIR QUALITY RECEPTORS

PINS REFERENCE NUMBER:
EN010158/APP/6.3

0

0.5

1

Kilometers

Scale: 1:28000 @A3

REV 01

